



# THE FRIDAY NOTES

Lloyd Harbor School • December 12, 2014



## **SEL FAMILY WORD FOR DECEMBER: Happy**

**QUOTE OF THE WEEK:** "Rejoice with your family in the beautiful land of life." ~ Albert Einstein

**UPCOMING LHTV REPORTERS:** Julianne Massa (6C) and Anna Spehr (6B)

**LHTV MUSICIANS:** Bianca Kelly (6L) and John Coyle (4L)

**SCHOOL STORE:** Sophia Keschner and William Spehr (6C)

**BUS CALLERS:** Emma Solis and Kyla Cohen (6L)

<b>Monday</b> <b>12/15</b>	
<b>Tuesday</b> <b>12/16</b>	Acting Auditions – Aladdin 3:15-5:30 PM SIT
<b>Wednesday</b> <b>12/17</b>	
<b>Thursday</b> <b>12/18</b>	Grade 2 & 3 Author's Visit Final Auditions – Aladdin 3:15-5:30 PM
<b>Friday</b> <b>12/19</b>	Holiday Assembly 2:20 PM

## **TABLE OF CONTENTS**

After School Chess Program.....	P3
Cold Spring Harbor Library Programs .....	P4
Cold Spring Harbor Holiday Events.....	P5

## **BOARD OF EDUCATION**

The next regular Board of Education meeting will be held on Tuesday, January 13th, at 8pm at the DO.

## **REPORT CARDS**

Elementary report cards (K-6) will be available today, Friday, as of 5PM, on the Parent Portal. They will not be printed or mailed home. If you need instructions on setting up an eSchool Parent Portal Account, please refer to last week's Friday Notes or the CSH website under *Our Schools...Lloyd Harbor...School Notices*.

## **ATTENTION ALL STUDENT COUNCIL REPRESENTATIVES**

There will be a Student Council meeting this upcoming Monday, December 15th at 8am in the gym. All representatives must attend!

## **LH SCHOOL STORE - (HOLIDAY HOURS)**

The school store will be open from 8:30am-8:50am all week this upcoming week. We are fully stocked with new LHS stuffed lions, mood rings and erasers! Stop by the LHTV newsroom to buy your school gear!

## **NYSSMA**

All NYSSMA forms are due Friday, December 19<sup>th</sup>. Forms were sent home with the students.

### **MORNING ACTIVITIES DROP-OFFS**

Parents - please do not bring your children to school before 8:30 AM unless they have a specific activity. We do not have personnel to monitor early drop-offs. Thank you for your cooperation.

### **6<sup>th</sup> GRADE SELECT CHORUS**

Select Chorus ends at 3:45PM. Pick-up is at the back circle. If you need the permission slip, it can be found under "School Notices" on the school's website. For our Winter Concert on Thursday, January 22<sup>nd</sup>, we are asking the singers to add a splash of Coral to their concert attire.

### **EMERGENCY CHANGES IN TRANSPORTATION**

If a situation arises where you must make a change in your child's afternoon dismissal from school and you e-mail us in the office, we will respond to your e-mail so you will know it has been received. If you do not receive a response, please follow up with a telephone call to check if it was received.

### **EARLY PICK-UP**

If you decide, after your child has left for school, that you need to pick him/her up early, it is not necessary to call ahead. Please just come to the front office and we will call your child for dismissal. Back-up notes are still necessary when your child has a change in transportation at the end of the day.

### **AFTERNOON ACTIVITIES - DISMISSAL**

All students attending an after-school activity will be picked up at the back circle. Please follow the traffic pattern of the PM dismissal (reverse traffic flow). As always, the safety of our children is paramount. Children are not permitted to cross between cars or through the parking lots.

### **FROM THE LHS/PTG...**

#### **Cookie Bake**

A huge thank you to Denise Kiely for organizing the cookie bake again this year. You did an awesome job!

#### **2nd Grade Magic Night**

Attention all magic enthusiasts. Get ready to be tricked, stunned and entertained at this year's Magic Night, open (ONLY) to all 2nd grade students. Save the date for **Wednesday, January 7** from 7:00 – 8:00 in the LHS Little Theatre. Stay tuned for details.

#### **Earth Day Celebration**

We are looking for volunteers to help with our LHS Earth Day Celebration planned for April. Planning has already begun. Anyone interested in helping out should contact Heather Spehr at [lanespehr@hotmail.com](mailto:lanespehr@hotmail.com) or Dawn Flower at [dawnmflower@gmail.com](mailto:dawnmflower@gmail.com).

#### **Sixth Graders - Yearbook**

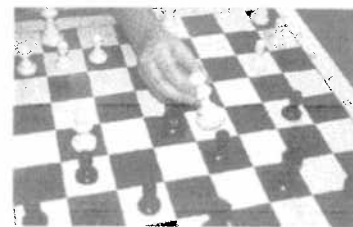
**Get your pictures in the yearbook!** The Yearbook Staff invites students and parents to submit photos for the yearbook. We are looking for a baby photo, 2nd grade portrait, 5th and 6th grade play, 4th through 6th grade concerts and 2nd through 6th grade field days, Halloween, class trips, Symbols of America, Luau, Colonial Day, Philadelphia trip, classroom celebrations, and Science Fair. Our photographers can't be everywhere. Help us get as many photos as possible to create a terrific book everyone will want to have. Here is how you can submit photos online: Go to <https://images.schoolannualonline.com/login> If it does not automatically log you into the site, enter username: 401854101. Browse to select the photo(s) you wish to upload. Enter information about the photo and provide contact information in case the staff needs additional information. Click "Save Details". It's that easy! Submit your photos today! The last day to submit photos is 03/01/2015. The Yearbook Staff will review all photos and determine final yearbook content. We cannot guarantee that all submissions can be used in the book.

# THE LONG ISLAND CHESS NUTS

## After-School Chess Program

*These Chess Classes for children are back by popular demand!*

THESE HIGHLY ACCLAIMED CHESS CLASSES FOR CHILDREN ARE BEING HELD IN OVER 50 SCHOOLS ACROSS LONG ISLAND EACH YEAR, WITH OVER 2,000 CHILDREN REAPING THE BENEFITS.



DO YOU PLAY CHESS?

*Chess* helps children get better grades in school!

*Chess* gives children: concentration, strategy skills, self-esteem, & confidence!

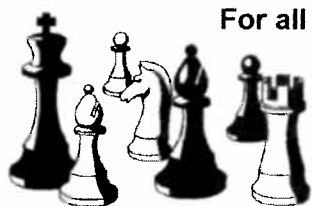
*Chess* is educational: studies have shown that chess increases reading and math levels!

Winter session  
starts soon!

Learn & Improve  
your chess skills!

- ◆ Each week: a Chess Lesson is followed by coached playing time
- ◆ Instruction by Top Chess Coaches
- ◆ Chess Tournament - with awards at the conclusion for all who participate!
- ◆ Innovative, Challenging, & Fun!
- ◆ Play Chess against others - Sections by Grade & Ability

*"Expand a child's mind! Experience the excitement of the fastest growing sport in the U.S.!"*



Reserve early - Space is very limited!

For all Boys and Girls, in grades 1 to 8, at any level of ability (from beginner to advanced)

We will meet on: Mondays from 3:05pm to 4:00pm

Dates: Jan. 12, 26, Feb. 2, 9, 23, Mar. 2, 9 & 16 (Awards)

Registrations are due by: Jan. 5 - accepted later if space is available

Cost: \$108.00 per child for the 8-week program (+\$8.00 after Jan. 12)

QUESTIONS: Tim Carney, Chess Nuts Administrator, (516) 582-3289

Margarita Lanides, Chess Nuts Director, (516) 739-3907

→ **NOTE:** No confirmation will be sent - you will only be notified if the class is filled.

The Long Island Chess Nuts is a non-profit organization, whose goals are to promote the educational and positive benefits of chess to all children. It currently has over 2,000 members, with many chess champions. It is "the largest organization on Long Island where children can advance their chess skills," as quoted in *The NY Times* (Mar. 15, 1998); and it "provides a regular schedule of play and instruction for school-age children...[in] the sport of kings," *Newsday* (Dec. 12, 1998). It has also been featured on Nickelodeon, and TV Channels 29 and 12. It has been in the top ten of all chess clubs in the U.S. since 2010, as reported by the U.S. Chess Federation. Margarita Lanides, its director, was the recipient of the prestigious 2006 New York State Chess Association Hall of Fame Award. Sponsors and supporters of the Long Island Chess Nuts have included Citibank, Roosevelt Field, Anton Newspapers, Sears, and many others. It is also a member of the Garden City Chamber of Commerce.

X-

Yes, I would like my son/daughter to participate in the Long Island Chess Nuts' After-School Program at Lloyd Harbor Elementary School. Enclosed is \$108.00 for the entire eight-week program.

► If received after Jan. 12<sup>th</sup> (the first day of class), the registration fee is \$116.00.

I understand and agree that the Club & its Officers have the right to expel any member for inappropriate behavior, and, that they shall not be held liable for my child's safety, nor for the loss of any personal property, while at these meetings. Further, to insure our children's safety, a parent (or a responsible adult) must pick up his/her child, unless a signed permission slip is sent in with this registration form. Any refund requests after the first day of class will incur a \$5.00 processing fee.

Name: \_\_\_\_\_ Grade: \_\_\_\_\_ Phone: \_\_\_\_\_

Address, Town, Zip: \_\_\_\_\_ Email: \_\_\_\_\_

Date \_\_\_\_\_

→ **NOTE:** Parent's Signature – a parent must sign for child to be registered

→ **MAIL TO:** Long Island Chess Nuts – Lloyd Harbor  
PO Box 762, Rockville Centre, NY 11571

Please make checks payable to: Long Island Chess Nuts (do not staple check to this form)

If you wish to pay by Credit Card, please add a \$4.00 credit card processing fee, and call – (516) 739-3907

Mastercard, Visa, and Discover are accepted. This registration form must also be mailed in to the L. I. Chess Nuts address above.

*Remember: "the benefits of Chess last a lifetime"*

**For Kids & Teens! *Programs from Cold Spring Harbor Library's Youth Services Department. Registration Required!***



**Rice Krispie Candy Cottages**  
**Monday, December 15th &**  
**Wednesday, December 17th at 4:30pm**  
**For children in grades K-6**  
Build and decorate a rice krispie treat candy cottage to celebrate the season!

**TEEN Crafternoons**  
**Friday, December 19th 3pm**  
**For children in grades 6-12**

Take a study break and craft away! We'll provide the supplies so you can get your craft on! Stop by Miss Kate's desk on the Lower Level for all material.



**For more information about any Kids or Teen Programs, contact a Youth Services Librarian at the Cold Spring Harbor Library - 631-692-6820**

**For Adults! *Programs for Grown-Ups from Cold Spring Harbor Library's Information Services Department***

***Planning for Winter Recess? Remember the FREE Museum Passes Available @ Your Library!***

Our complete roster includes:

**Long Island Museums:**

- \* Cold Spring Harbor Fish Hatchery
- \* Cradle of Aviation Museum
- \* Heckscher Museum of Art
- \* Long Island Children's Museum
- \* Nassau County Museum of Art
- \* Old Westbury Gardens
- \* Suffolk County Vanderbilt Museum & Planetarium
- \* The Whaling Museum & Education Center of Cold Spring Harbor

**Note:** Reservations can be taken up to three months in advance of your desired date, subject to availability.



**New York Museums**

- \* American Museum of Natural History
  - \* Intrepid Sea, Air & Space Museum
  - \* Solomon R. Guggenheim Museum
- (also admits to the Brooklyn Museum)*

**For more information about any Adult Program, contact Information Services at the Cold Spring Harbor Library at 631-692-6820.**

# *Cold Spring Harbor* *2014 Holiday Events*



## **Saturday, December 6<sup>th</sup>**

12:00 - 4:00pm • LIU Post Chorus will be caroling down Main Street  
2:00 - 4:00pm • L.I. Authors Holiday Book Signing at the SPLIA Gallery  
5:00pm • CSH Fire Department Tree Lighting

## **Sunday, December 7<sup>th</sup>**

1:00 - 4:00pm • Carriage Rides on Main Street

## **Saturday, December 13<sup>th</sup>**

12:00 - 4:00pm • LIU Post Chorus will be caroling down Main Street

## **Sunday, December 14<sup>th</sup>**

1:00 - 4:00pm • Carriage Rides on Main Street  
1:30 - 4:00 • Santa comes to town at The Firehouse Museum  
3:00 - 4:00pm • MetroGnomes Suzuki violin players at the SPLIA Gallery

## **Saturday, December 20<sup>th</sup>**

12:00 - 4:00pm • LIU Post Chorus will be caroling down Main Street

## **Sunday, December 21<sup>st</sup>**

1:00 - 4:00pm • Carriage Rides on Main Street

